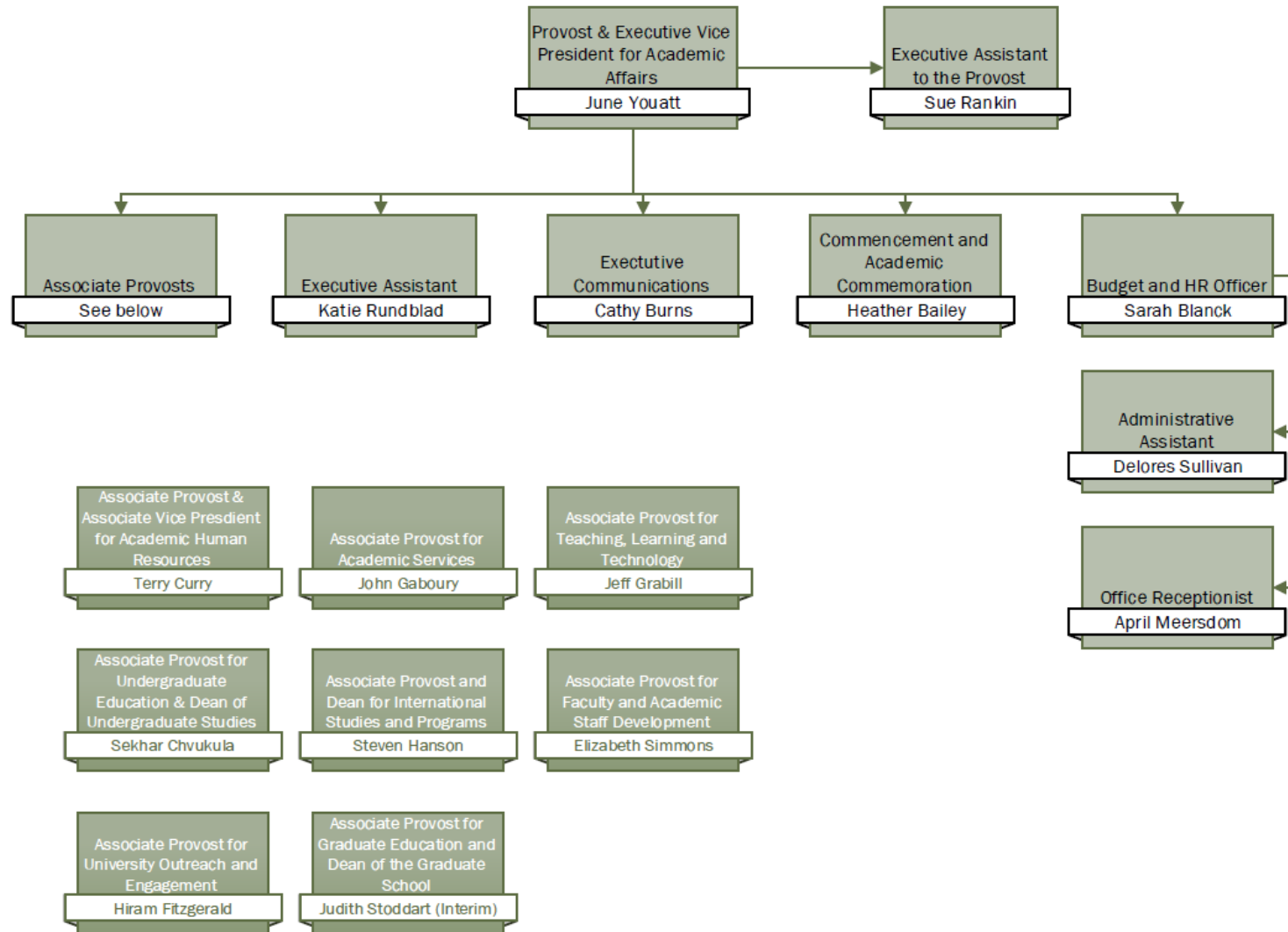


Advancing a Culture of High Performance

Allocating Resources

Sarah Blanck, Office of the Provost





What are your resources?

- Financial
 - General Fund
 - Research
 - Gifts
 - Earned income
 - Savings
- Human (people)
- Physical (structure)
- Time



Stewardship

The conducting, supervising, or managing of something; *especially*: the careful and responsible management of something entrusted to one's care (Merriam-Webster)

- Resources are not infinite
- Budget
- Long- and short- range planning
 - Needs
 - Sources

General Fund

- Annual Allocations
- Annual Adjustments:
 - Salary Increments
 - Operating Support
 - 1% Reallocation
 - Program Allocations/granted budget requests
 - Reductions (1% in FY18)

Earned Income

- Ticket sales
- Conferences
- Swag sales



Great Lakes Hop and Barley Conference

March 2-3, 2017
Westin Book Cadillac, Detroit



Gifts

- Endowment
 - Donor defined intent
 - Gift invested – Interest spent
- Expendable
 - Discretionary
 - Specific Purpose

Reserves (Savings)

MICHIGAN STATE UNIVERSITY
FOR FISCAL YEARS 2014-2017 (as of 3/20/17)

UNRESTRICTED ANALYSIS - HISTORICAL TREND

RECONCILIATION

RC	Description	2013-14	2014-15	2015-16	2016-17	% Change CY vs PY
	<i>Annual Carryforward Percentage (ACP)</i>	4%	4%	4%	4%	
Academic Units						
	General Fund carryforward	\$ 109,709,156	\$ 114,069,174	\$ 132,062,382	\$ 336,488,088	154.8%
	Plant Fund	11,891,250	17,482,319	10,417,198	15,497,066	48.8%
	Designated Fund	108,575,988	128,852,126	162,267,437	143,798,688	-11.4%
	Auxiliary Fund	23,416,981	28,575,158	26,156,559	28,672,282	9.6%
	Total Academic Units	\$ 253,593,375	\$ 288,978,777	\$ 330,903,576	\$ 524,456,124	58.5%
Central/Auxiliary Units						
	General Fund carryforward	\$ 167,218,368	\$ 206,922,217	\$ 173,294,453	\$ 313,916,234	81.1%
	Plant Fund	303,936,722	325,214,089	343,283,837	402,005,839	17.1%
	Designated Fund	255,457,584	294,842,387	362,605,691	270,620,380	-25.4%
	Auxiliary Fund	61,943,193	59,133,103	54,073,704	126,315,181	133.6%
	Total Central/Auxiliary Units	\$ 788,555,867	\$ 886,111,796	\$ 933,257,685	\$ 1,112,857,634	19.2%
Grand Total						
	General Fund carryforward	\$ 276,927,524	\$ 320,991,391	\$ 305,356,835	\$ 650,404,322	113.0%
	Plant Fund	315,827,972	342,696,408	353,701,035	417,502,905	18.0%
	Designated Fund	364,033,572	423,694,513	524,873,128	414,419,068	-21.0%
	Auxiliary Fund	85,360,174	87,708,261	80,230,263	154,987,463	93.2%
	Grand Total	\$ 1,042,149,242	\$ 1,175,090,573	\$ 1,264,161,261	\$ 1,637,313,758	29.5%

Reserves (cont.)

MICHIGAN STATE UNIVERSITY

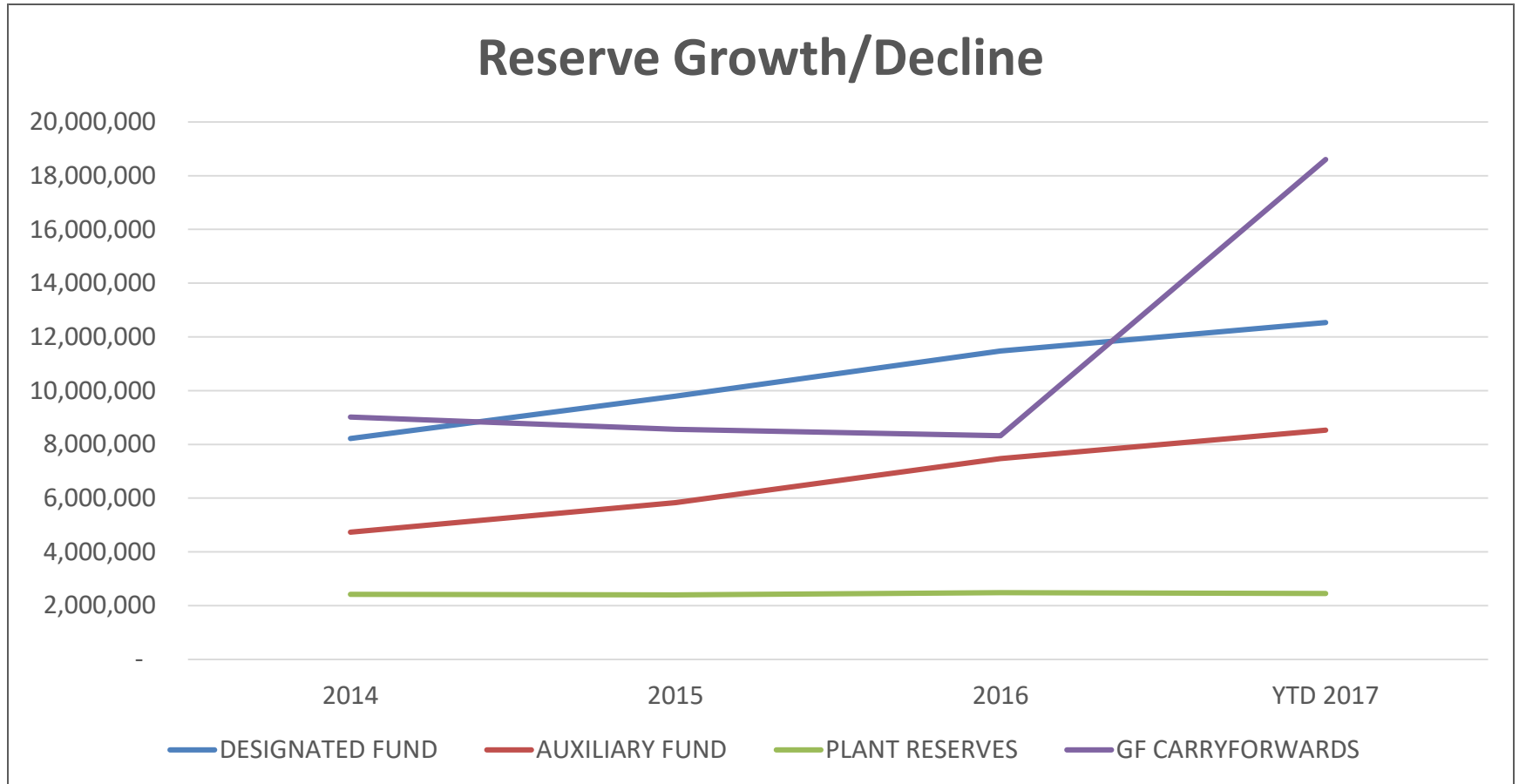
FOR FISCAL YEARS 2014-2017 (as of 3/20/17)

UNRESTRICTED ANALYSIS - HISTORICAL TREND

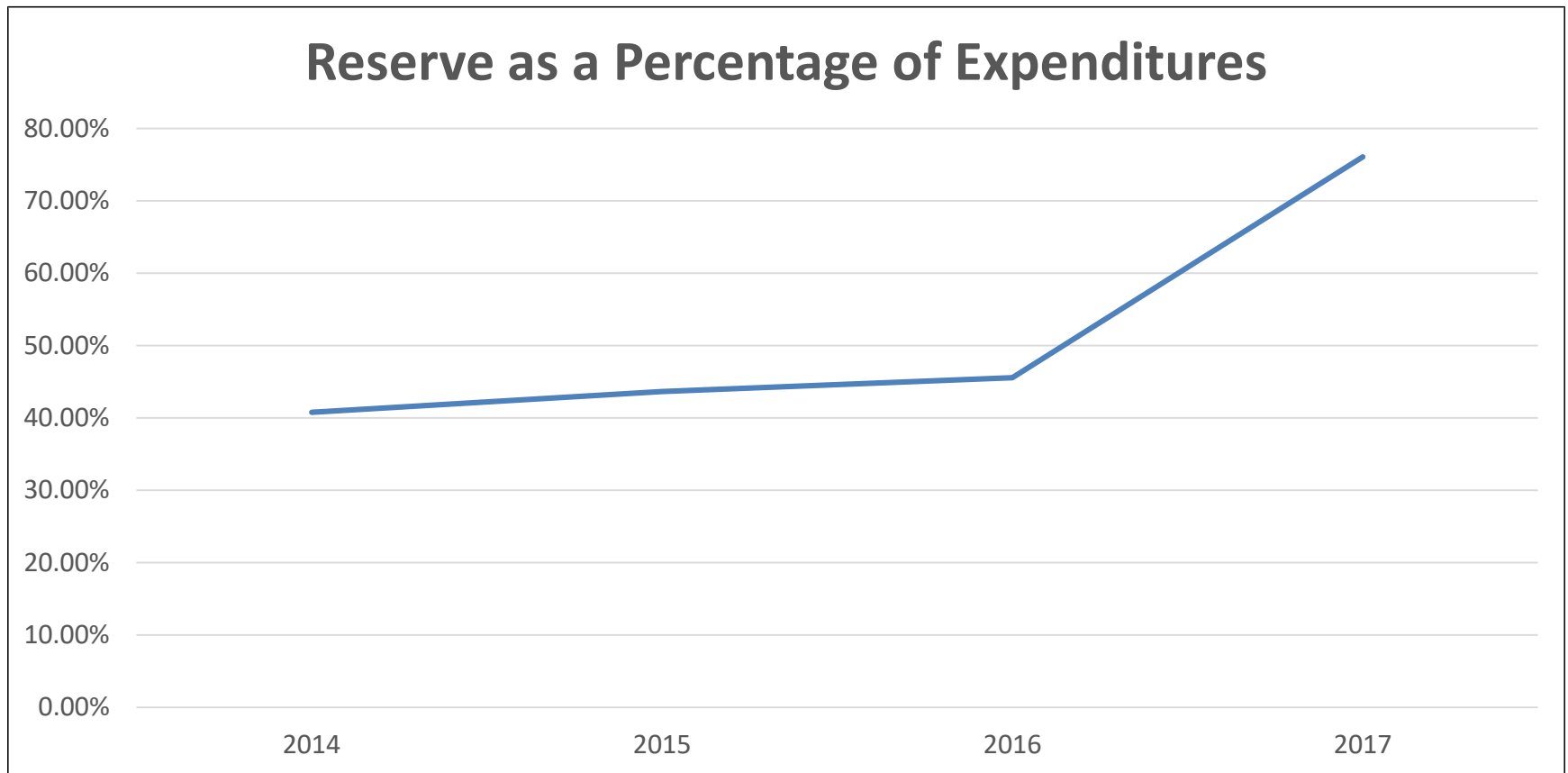
ACADEMIC UNITS

RC	Description	2013-14	2014-15	2015-16	2016-17	% Change CY vs PY
	<i>Annual Carryforward Percentage (ACP)</i>	4%	4%	4%	4%	
46	College of Veterinary Medicine					
	General Fund carryforward	\$ 9,018,278	\$ 8,561,113	\$ 8,323,480	\$ 18,607,400	123.6%
	Plant Fund	2,423,693	2,396,585	2,481,596	2,447,183	-1.4%
	Designated Fund	8,219,106	9,793,360	11,477,918	12,536,023	9.2%
	Auxiliary Fund	4,730,992	5,836,528	7,477,273	8,529,480	14.1%
	Total College of Veterinary Medicine	\$ 24,392,069	\$ 26,587,586	\$ 29,760,267	\$ 42,120,086	41.5%

Reserves (cont.)



Reserves (cont.)



Reserves (cont.)



- Why do we create reserves?
- What is the right level?
- How do we use them strategically?

What do you need?

- New Operation
- More Space
 - New building
 - Repurpose existing structure
 - Replace existing structure
- Technology
- More Personnel
- Update
- Repair

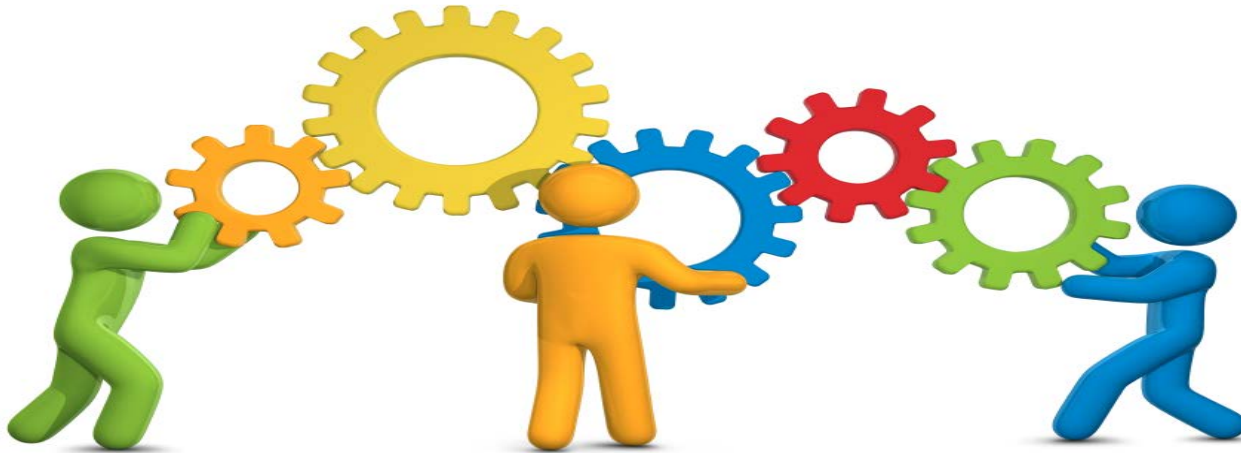


Exercise

- Who are our partners?
 - Internal & external to MSU
- What current resources do we have?
- What are the short & long range plans?
- What are the short & long term funding needs?
 - Recurring
 - Non-recurring

Requesting Support – Think Comprehensively

- Demonstrate self-support
- Sharing cost - Use of reserves
- Sharing cost – Use of partners
- Demonstrate investment



Sarah Blanck

Budget & Human Resources Officer – Office of the Provost

blancks@msu.edu

5-1525