



MSU – FADP

Your Mission – Your Budget

Bob Patterson, Chief Financial Officer
Division of Residential and Hospitality Services

Sam Larson, Asst Dean Operations and Finance
College of Education

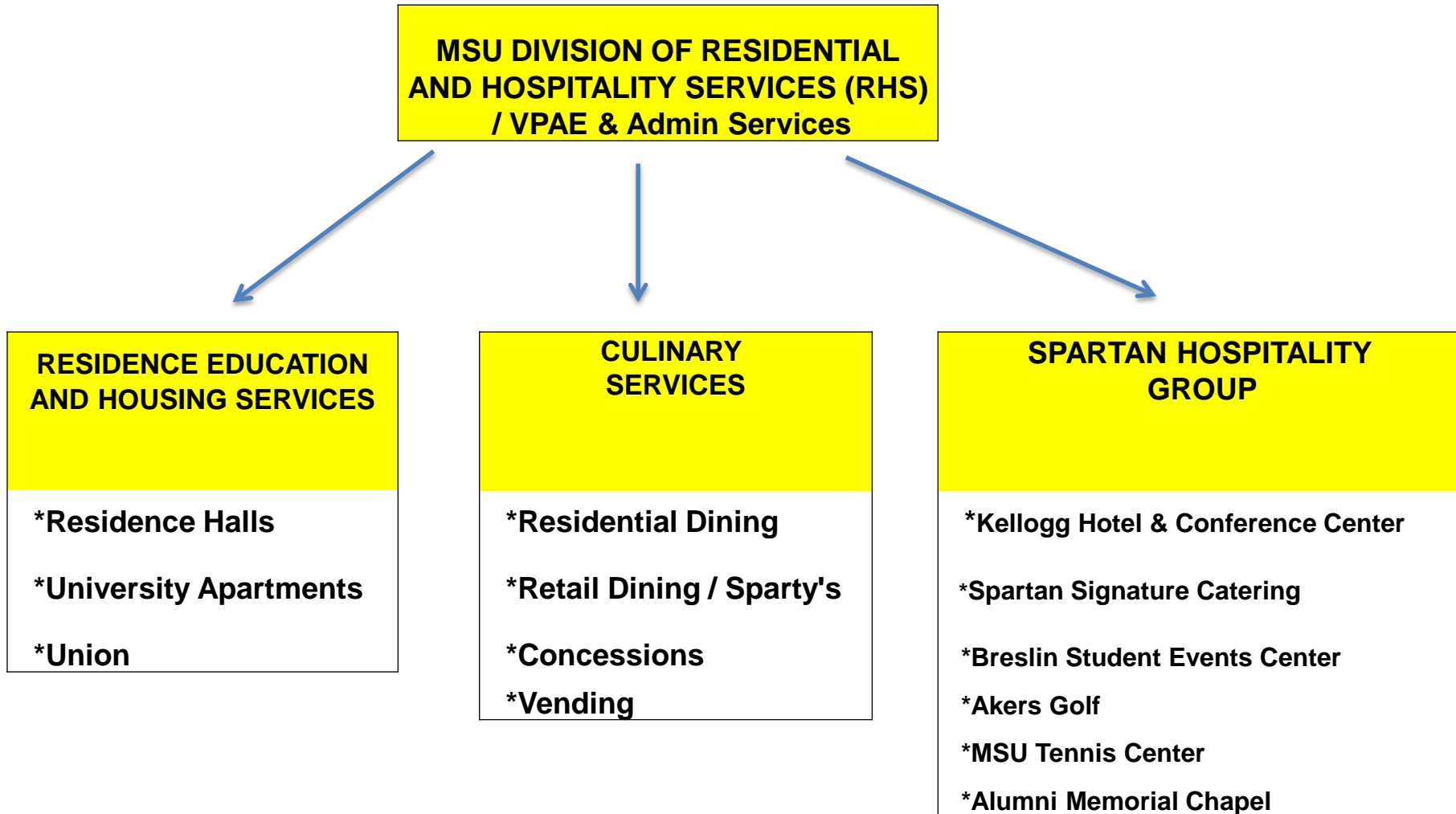
November 29, 2016



Today's Presentation

- Introduction to RHS and EDU
- Relationship between Mission and
 - Budget
 - Margins
 - Effectiveness
 - Efficiency
- Reviewing Budgets

MSU RHS Organization Chart



Overview of RHS

- Residential and Hospitality Services (RHS) is a self-supporting auxiliary of MSU
- Except for \$690,000 in MSU Union general funding, no tuition or State of Michigan higher education appropriations go to RHS
- RHS operations compete with the private sector for many of our services

Overview (cont.)

- 17,100 Residence Hall beds
- 11 Dining Halls
- 1,100 apartments
- 7 million square feet of building space
- \$2.5 billion building replacement cost
- 160 Kellogg Hotel guest rooms
- 40,000 meals served per day
- 800+ full time staff, 3,300+ student employees
- 36 golf holes, 8 indoor tennis courts, 12 bowling lanes, Chapel, 15,000 seat student event center
- 3 Starbucks locations
- 1 snowmobile

Overview (cont.)

- \$245 million in annual revenues
- \$ 12 million in annual Just-In-Time repair costs
- \$ 36 million in annual food/stores costs
- \$ 12 million in annual utility costs
- \$325 million in long term debt (\$370 million max)
- \$ 20 million in annual debt service costs
- Reserve ranges from \$12 million minimum to \$75 million over the course of the year.
(minimum = 5% of annual revenues)

Culinary Services – South Pointe Dining at Case Hall



Culinary Services – Sparty's Holmes Hall



Breslin Student Events Center



MSU Union / North Engagement Center / Mosaic Multicultural Center / Shopping / Rec



MSU Alumni Memorial Chapel



Forest Akers Golf Course



MSU Tennis Center



A photograph of the Kellogg Hotel & Conference Center at dusk. The building is a multi-story brick structure with a large, illuminated canopy over the entrance. The canopy features the text "Kellogg Hotel & Conference Center" in white and "Supporting continuing education" in green. A green tree-shaped light fixture is mounted on the canopy. The entrance is lit up, and there are trees and a flagpole in the foreground.

Kellogg Hotel & Conference Center

Supporting continuing education

1855 Place

Site plan – aerial view



Overview of College of Education



Overview of EDU

4 Academic Departments

GF Recurring \$27.6 M

GF RBI \$5.1M

Grants \$20 M

Ranked Faculty AF FTE 175

Non-academic AF FTE 90

Undergrads 1,961

Graduate 1,583

Overview of EDU



STILL LEARNING.
STILL LEADING.

#1

-  ELEMENTARY EDUCATION
-  SECONDARY EDUCATION
-  REHABILITATION COUNSELING

U.S. News & World Report:

> *SIX graduate programs ranked in the TOP 5*

MISSION

...our mission is to advance knowledge and transform lives ...



RHS - MISSION

- DOSE - Delivering Outstanding Spartan Experiences

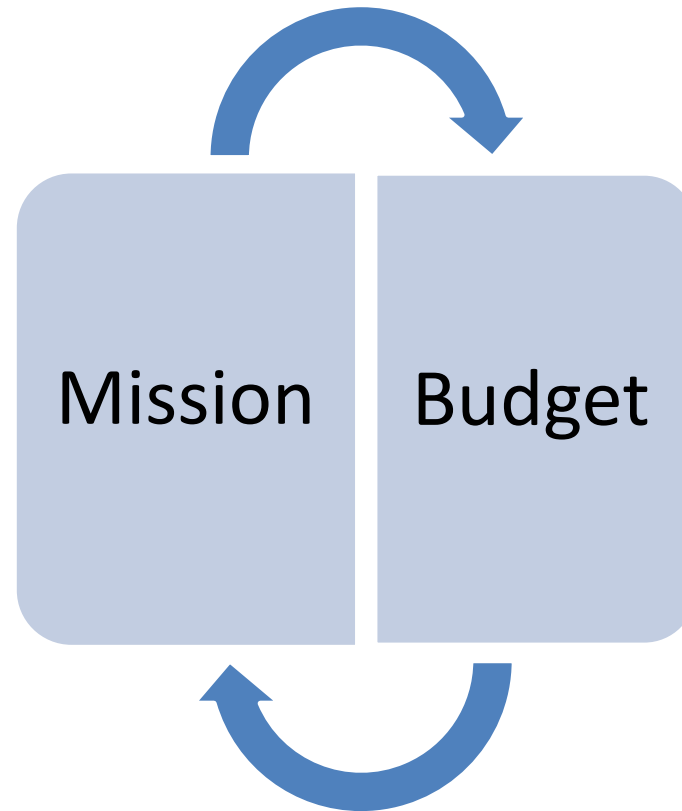
EDU - MISSION

- EDU: Leaderships, Scholarship and Service.
- Operations and Finance: Purpose Statement
 - We are transparent – making it easy to find and interpret information. We are responsive – approachable and supportive of immediate concerns. We are strategic – using evidence to support decisions and planning for the future.

YOUR MISSION

- How does your mission relate to your budget?
 - What is your mission or purpose?
 - Do the people you work with know this mission?
 - Do you talk about your mission? If not, why not? What would be the possible benefits of discussing your mission?
 - If you don't know you're mission, how might you go about finding or creating it?

RHS and EDU BUDGETS



MARGINS

- Budgets have to allow for flexibility
- Flexibility helps us to fulfill our mission
- Creating margins in RHS and EDU

MARGINS

- How do margins relate to your budget?
 - What is your margin?
 - How will you use it?
 - What would you do with a larger margin?
 - If you don't have plans for the margin, why do you have it?
 - Did you give part of your margin to someone else? How did they use it?

EFFECTIVENESS

- Doing the right thing - positively impacting and contributing to mission
- If you can't measure it, you can't manage it



EDU & EFFECTIVENESS

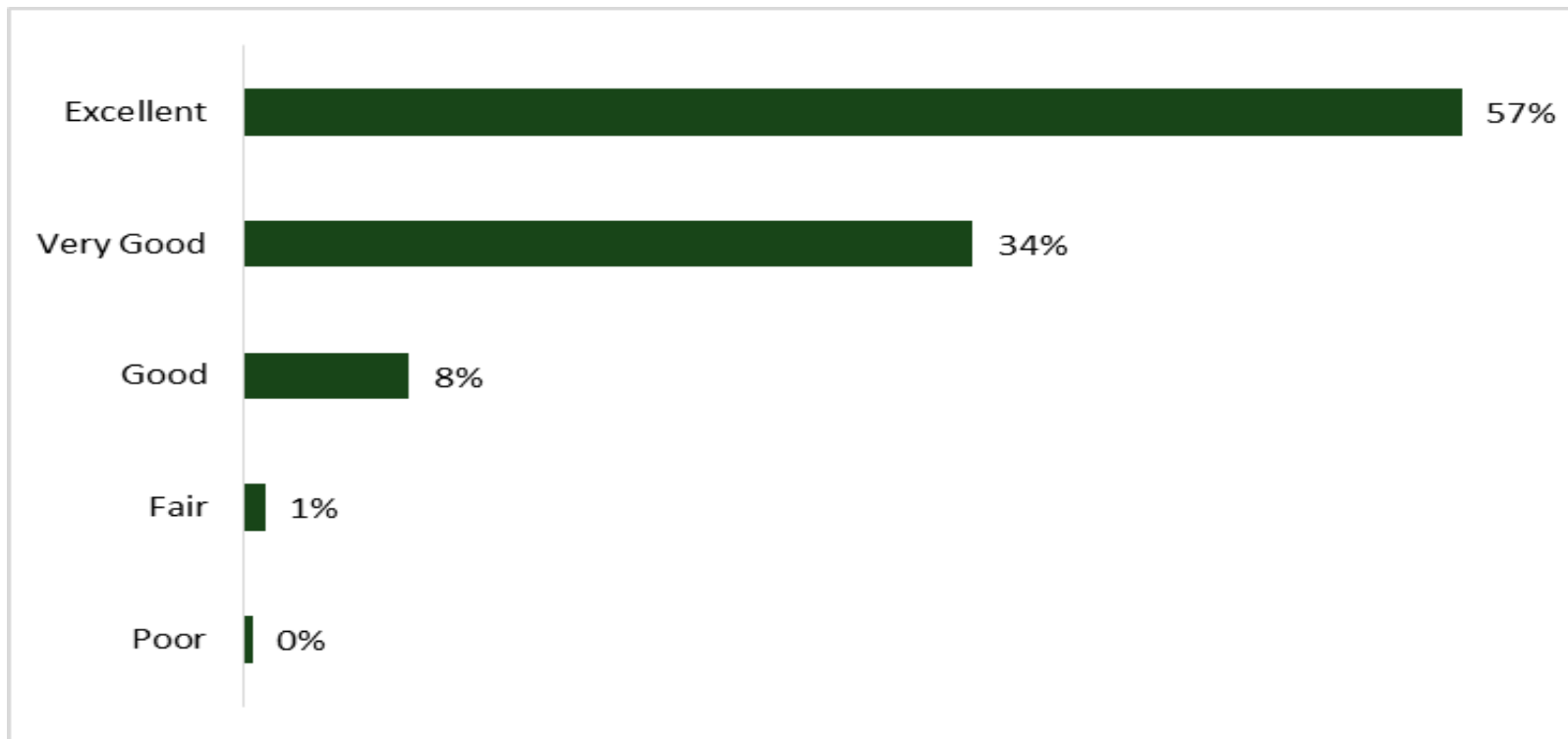
- External Benchmark – US News & World Report
- Admissions
- Graduation Rates
- Alumni Satisfaction
- Grants per TS FTE
- RBI Trends

RHS & EFFECTIVENESS

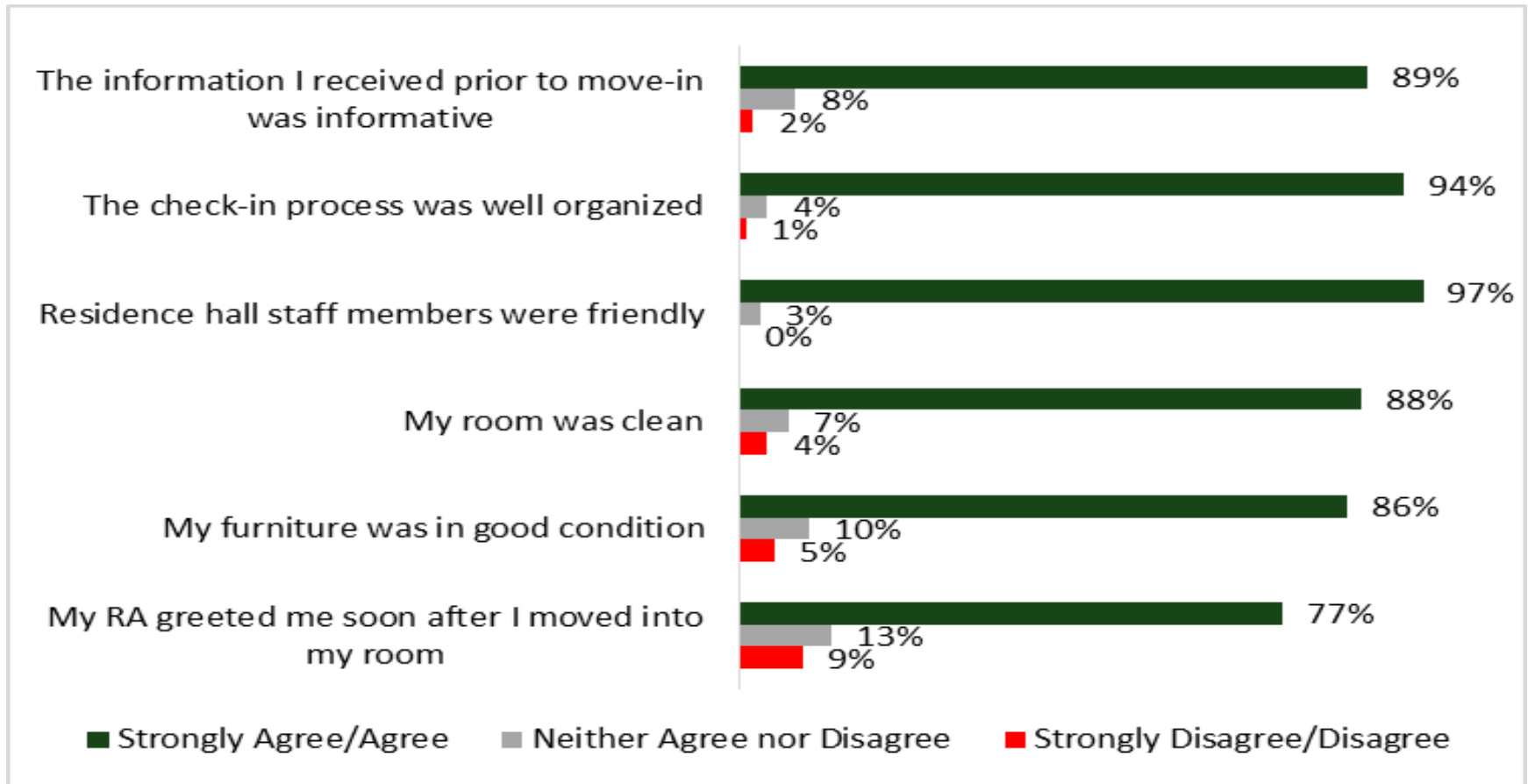
- RHS Assessment Office – surveys/feedback

RHS Fall Move-In Surveys Report

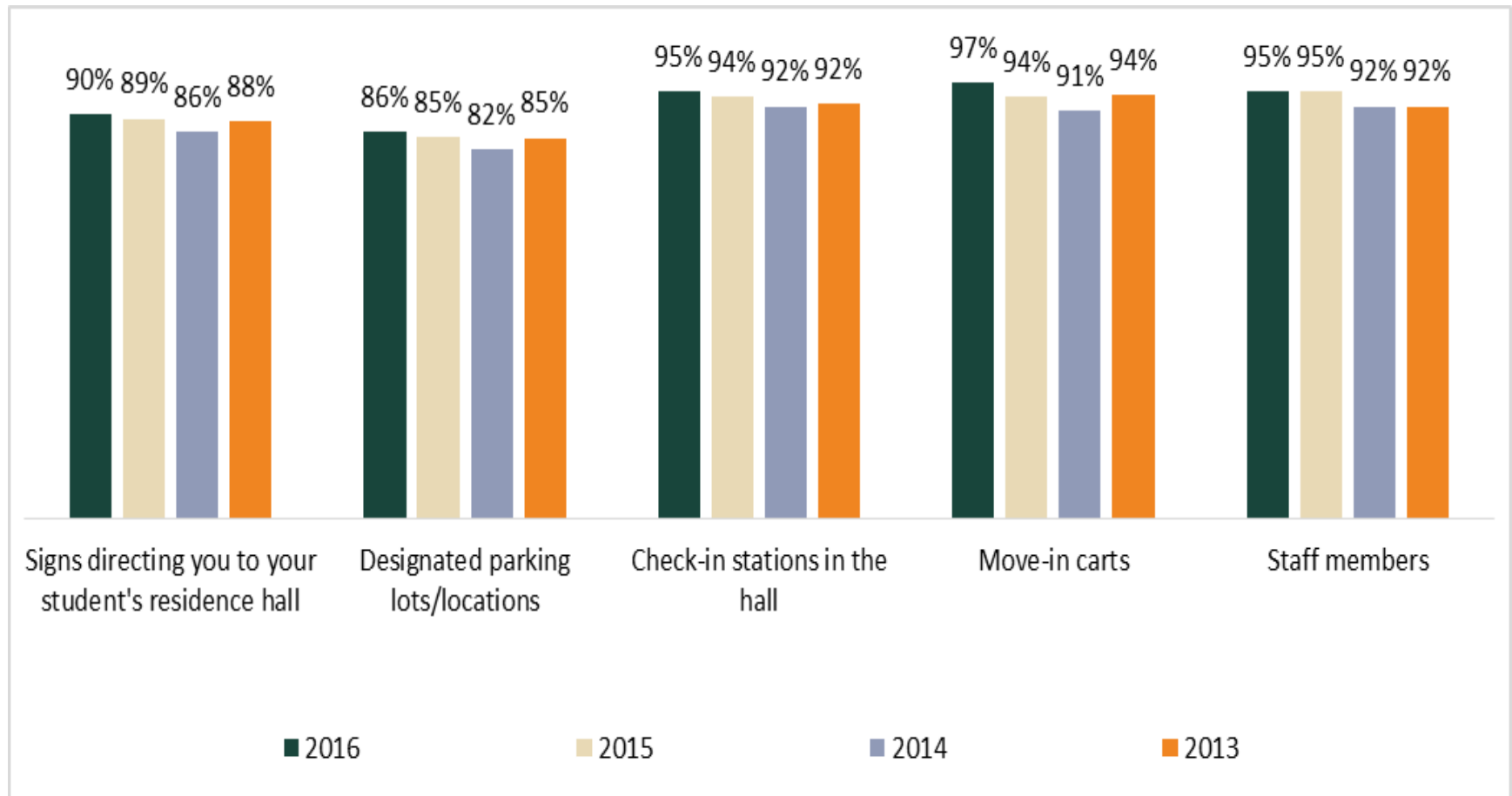
- Overall, how would you rate MSU's move-in process?



Please indicate your level of agreement with each statement below.



Parents



EFFICIENCY

- Doing things right – streamlining efforts
 - When you hear “efficiency” or “streamlining” – what comes to mind?

EFFICIENCY

- Efficiency and RHS



EFFICIENCY

- Efficiency and EDU
 - Review all open positions
 - Trend ratios of TS FTE to Support FTE to Student Headcounts
 - Develop disapproval reports – travel
 - Review HR Transactions – time and disapprovals
 - Employ Technology – Time Tracking

EFFICIENCY

- How does efficiency relate to your budget?
 - How efficient are your operations? How do you know?
 - What operations/processes would you like to review for efficiency?

Reviewing Budgets

- Habits in EDU
 - Monthly – Budget Officer Meetings
 - Ad hoc – Updates with Dean
 - March thru May – Prep for next FY Budget, meet with budget owners, request carryforward, draft budgets
 - June – July – Details
 - August – Updates to budget owners
- Emerging Habits
 - Shared Project codes; defined object codes
 - Carryforward analysis and trending

Reviewing Budgets

- Habits in RHS
- Lead measures
- Lag measures
- Working with MSU partners

Reviewing Budgets

- How often do you review your budgets? Who do you review them with?
- What do you review - actual to projected? Year to year? By object or subject codes? Across units?
- What new budget habit would you like to adopt?

February Meeting

- Down and dirty details



Today's Presentation

- Introduction to RHS and EDU
- Relationship between Mission and
 - Budget
 - Margins
 - Effectiveness
 - Efficiency
- Reviewing Budgets

Questions ?

Bob Patterson, Chief Financial Officer

Residential and Hospitality Services

E-mail: patter35@msu.edu

Phone: (517) 355-7458

R. Sam Larson, PhD, Asst Dean Operations & Finance

College of Education

E-mail: larsonrs@msu.edu

Phone: (517) 355-1734